

Putting Knowledge to Work: The State of Homeless Organizations in Orange, Osceola and Seminole Counties

Data from Nonprofit Search

January 2016

CENTRAL FLORIDA FOUNDATION



Central Florida Foundation is the place for people who want to invest in their community.

CENTRAL FLORIDA
FOUNDATION

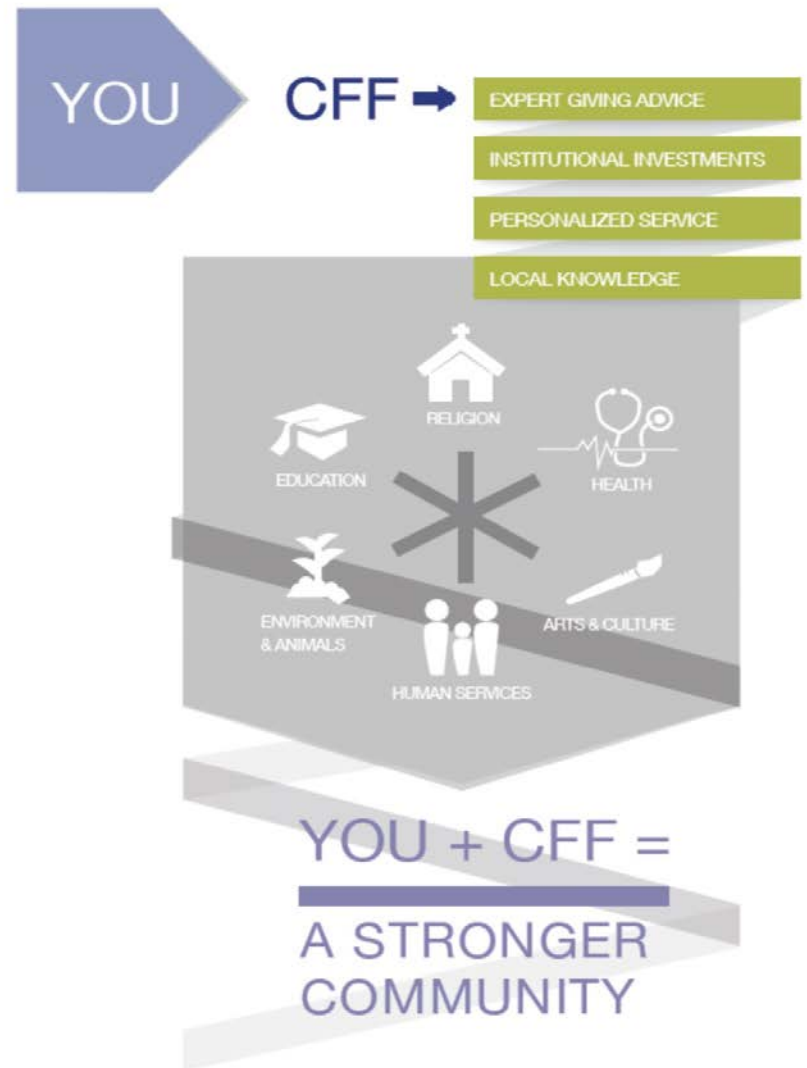
What We Do:

- Manage and invest your charitable gifts
- Offer you personalized service and expert giving advice
- Connect you with nonprofits that you feel passionate about
- Empower you to make stronger giving decisions that make a difference in your community

*We work with individuals, families, businesses, professional advisors, and nonprofits to **build community by building philanthropy.***

Since 1994:

- \$60 million in assets
- More than \$40 million to local nonprofits to improve their performance, effectiveness, impact and overall sustainability
- Central Florida Foundation is the community's trusted philanthropic home



What We Offer:

- Solutions that Help You Invest in Your Community
- Private Foundation Grant-Making Services
- Nonprofit Organization Endowment
- Planned Giving Assistance
- Community Investment Grant Rounds
- Advised Fund Grants
- Grants from Affiliates and Initiatives



Have You Heard Of?

- Entrepreneurs in Action
- Homeless Impact Fund
- 100 Women Strong
- Student Led Grant-making with UCF
- Scholarships
- Diebel Legacy Fund
- Winter Park Community Foundation



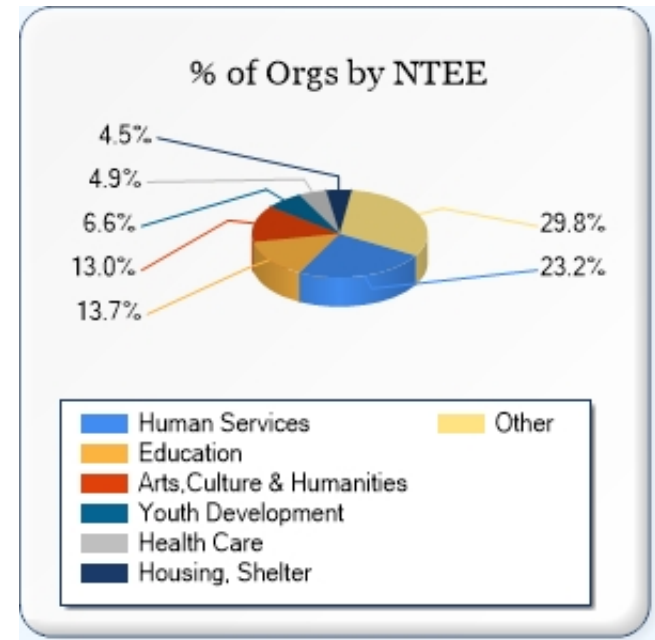
Nonprofit Search (cffound.org/nonprofit_search)

- Nonprofits complete their portrait
- Foundation staff reviews each portrait
- Helps you make stronger giving decisions
- Provides in-depth information about nonprofits' management, governance, financials and programs
- Learn about issues our community faces

The place for discovering Central Florida Nonprofits

Homeless Sub-Sector in Orange, Osceola and Seminole Counties

- 50 *Reviewed* Homeless Portraits ^{*1}
- Data from 314 Total *Reviewed* Portraits ^{*2}



* 1 – Homeless includes: Mental Health, Housing, Shelter, and Community Improvement.

* 2 - Data was collected from the Central Florida Foundation Nonprofit Search as of December 31, 2015.

Revenue & Expenses

Whole Sector Vs. Homeless Sector



Definitions

Capacity is infrastructure, tools, and resources necessary to do the job identified in the mission and/or strategic plan.

Sustainability is meeting the needs of the present without compromising the ability of future generations to meet their own needs. United Nations Definition

Source: Blue Avocado.org

Capacity: A Look Governance Practice

	Total Sector	Homeless
• Average Number of Board Members	16	17
• Board members are predominately Male		
• Average Number of Yearly Meetings	7	9
• Board Meeting Attendance	75%	73%
• Average Board Investment	77%	79%
• Board Term Limits Average	3	2.2
• Written Board Selection Criteria	46%	48%
• Conflict of Interest Policy	83%	88%

Capacity: A Look at Leadership Practice

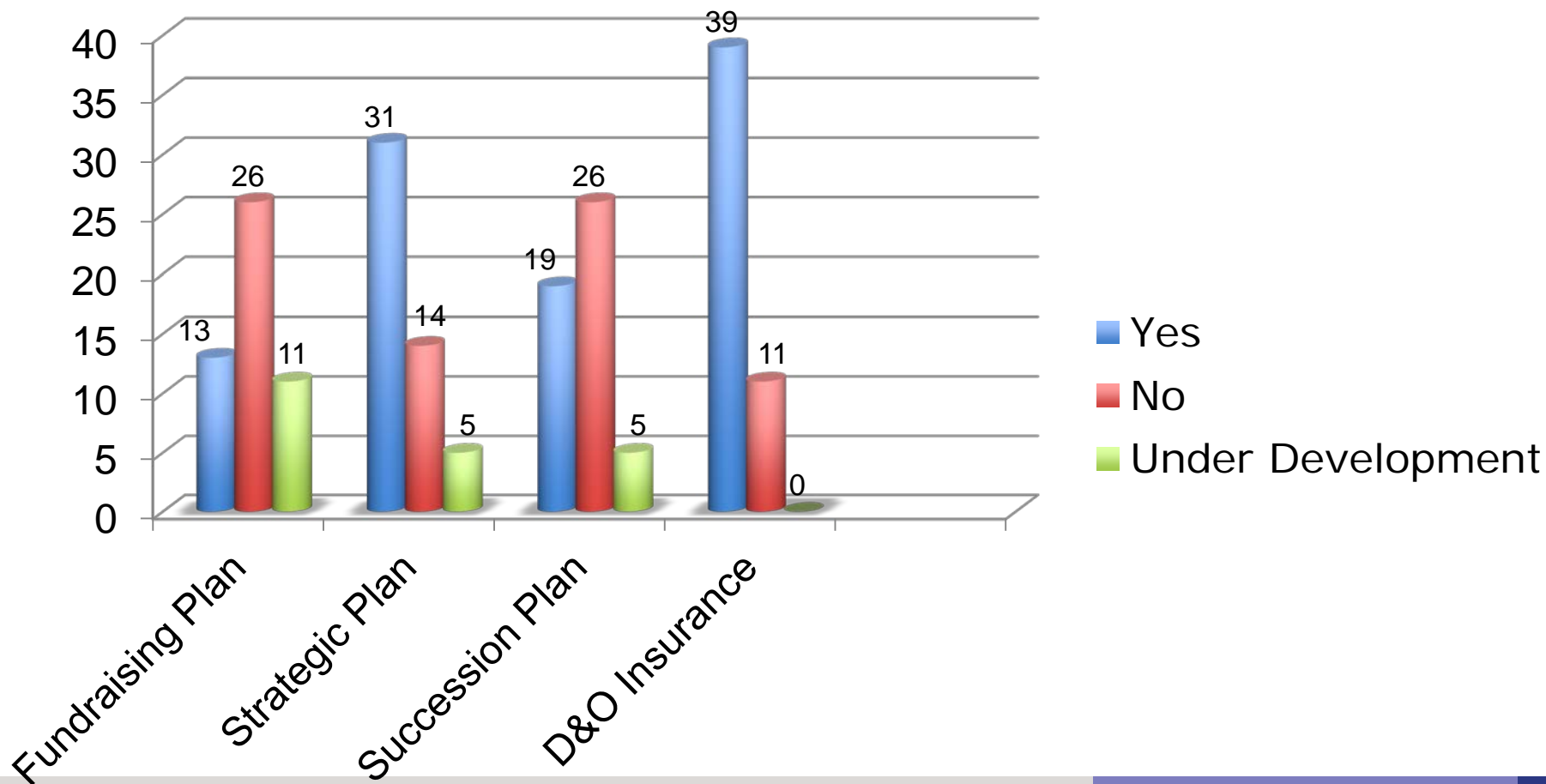
	Total Sector	Homeless
• CEOs performance review	74%	82%
• Performance review of senior staff	63%	76%
• Annual CEO Compensation		
Under \$50,000	34%	20%
\$50,000 to \$75,000	19%	18%
\$75,000 to \$100,000	16%	12%
Over \$100,000	32%	40%
Volunteer Led* ₁	12%	0%
Average CEO compensation	\$87,033	\$108,601

*1 – Volunteer Led – organizations with 0 paid part-time and full time staff with non-paid CEOs

Capacity: A Look at Staffing

	Total Sector	Homeless
• Full Time	17,979	3,883
• Part Time	6,920	639
• Contract Employees	2,632	135
• Volunteers	309,781	50,074
• Staff Retention	87%	84%

Capacity: A Look at Operational Policies



Sustainability: A Look at Endowment

- True Endowment - as reported in audited financial statements which must be permanently restricted by a donor and cannot be invaded.
 - 24% of Homeless-related Providers*₁ have endowment compared to 28% of the whole nonprofit sector*₂
 - Homeless sector endowment totals - \$11.8M
 - Whole sector endowment totals - \$480.9M

*1 - 12 Homeless organizations have endowment

*2 - 89 Organizations total have endowment

Sustainability: A Look at Capital Campaigns

Whole Nonprofit Sector*₁

13%

Goal - \$3.053 B *₃

Raised - \$15M

Homeless*₂

12%

Goal - \$8.5M

Raised - \$1.24M

*1 Sample: 41 organizations in Orange, Osceola, and Seminole counties

*2 Sample: 6 Homeless organizations in Orange, Osceola, and Seminole counties

*3 Inclusive of: Dr. Phillips Center for the Performing Arts @ \$534,000,000

Wycliffe Bible Translators Inc. @ \$1,000,000,000

Florida State University Foundation Inc. @ \$1,000,000,000

Sustainability: A Look at Funding Sources and Expenses for Homeless Organizations

- Total Government Funding - \$56.9 million *₁
- Total Funding from Individuals - \$21.2 million
- Total Funding from Foundations and Corporations - \$6 million
- Earned Revenue - \$107.7 million
- Special Events - \$6.8 million
- Average Overhead – 11% *₂
- Average Fundraising Cost – 2% *₃

*₁ – Total Govt. includes local, state, federal and unspecified govt. funding

*₂ - Average Overhead – sample size of 50 Homeless nonprofits

*₃ – Average Fundraising Cost – sample size of 50 Homeless nonprofits

Let's Stay Connected

- Visit cffound.org/news
 - Sign up for News and Announcements
- Like us on Facebook
 - [Facebook.com/cffound](https://www.facebook.com/cffound)
- Follow us on Twitter
 - @cffound
- Connect on LinkedIn